

# **Instructions for Midex Windows Driver Updates**

This document describes the steps you have to perform to update the Midex Windows drivers.

If the Midex driver were never installed on your system, you don't need to read these instructions. In this case you only have to keep your driver CD ready.

If the driver package was copied to your harddisk, please don't forget its location. Plug in the USB cable into your Midex and simply follow the instructions of the Windows Hardware Wizard.

Please choose the Windows System where you want to update the Midex driver.

- I. Windows 98 SE (see [page 2](#))**
- II. Windows Millennium (see [page 10](#))**
- III. Windows 2000 (see [page 18](#))**

## **I. Windows 98 SE Midex 8 Driver Update**

If you have already installed a Midex 8 please perform the following steps to update the Midex 8 USB Driver. Please pay attention to the end of these update instructions. The computer has to be shut down and switched off before the new Midex firmware becomes active.

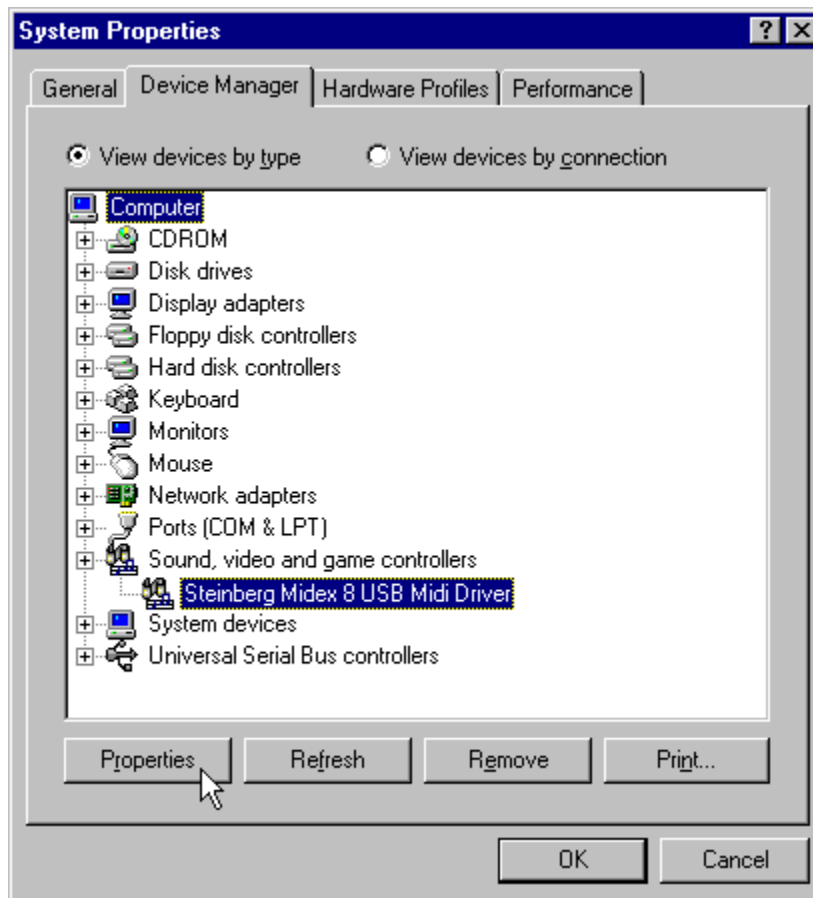
1.) Open the Start menu and select Settings/Control Panel.



2.) The Control Panel Window appears. DoubleClick the System Icon.



3.) Click the "Device Manager" tab and select the "Steinberg Midex 8 USB Midi Driver" located in the "Sound, video and game controllers" group. Press the Properties Button below the device list window.



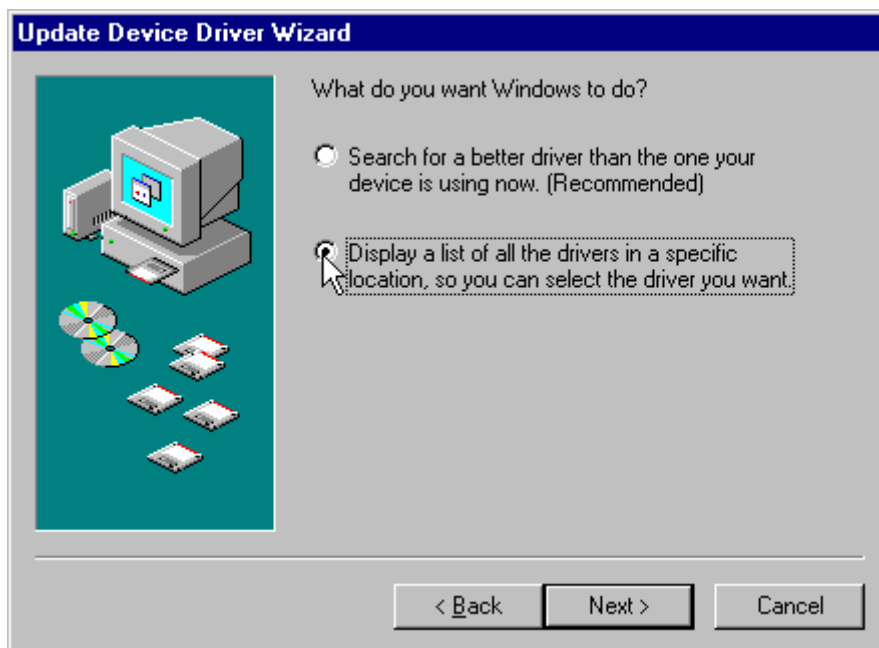
4.) Select the Driver tab and click the "Update Driver..." Button in the Properties dialog.



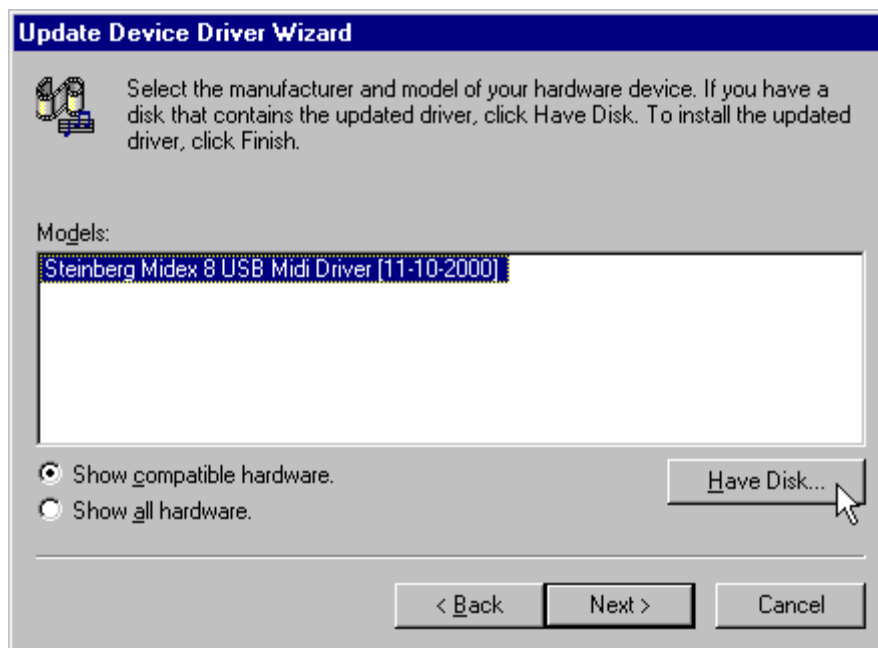
5.) Press the Next Button in the following dialog.



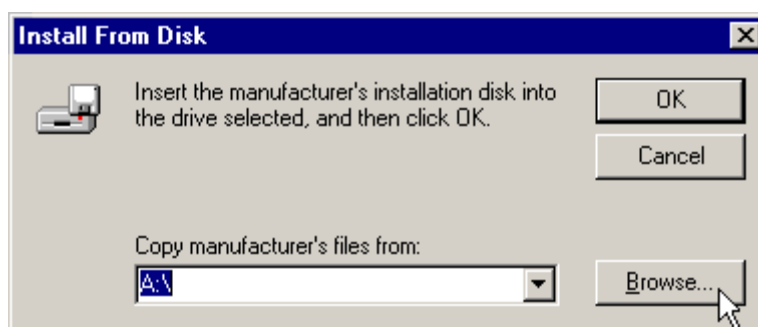
6.) Select "Display a list of the known devices ..." radio button and press the "Next" Button.



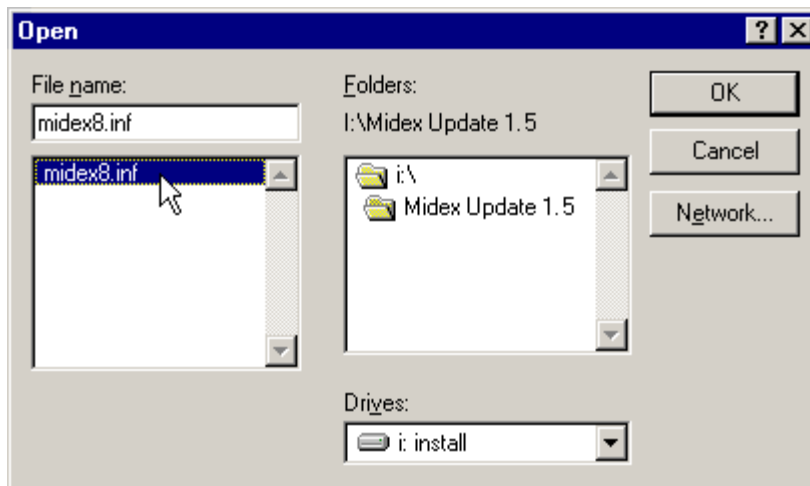
7.) Click the "Have Disk..." Button.



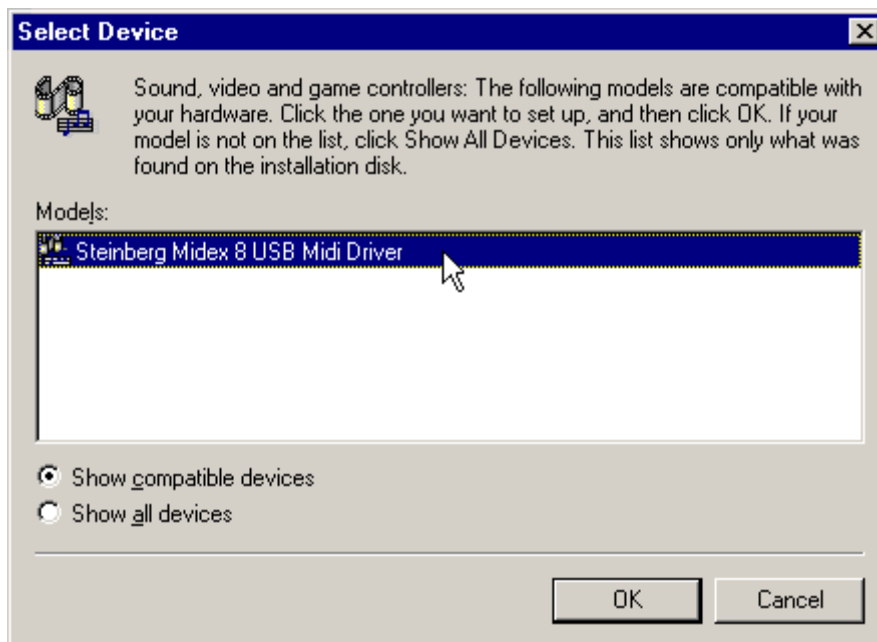
8.) Click the "Browse..." Button to select the new Midex Driver.



9.) Search the new Midex Driver directory, select the Midex8.inf file and press Open.



10.) Select the "Steinberg Midex 8 USB Midi Driver" in the List below and press the "OK" Button.



11.) Press the "Next" Button once again.

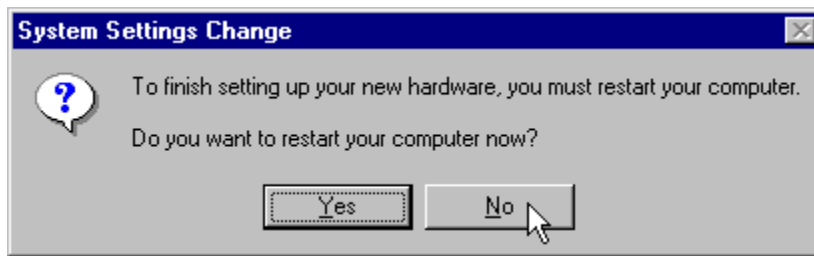


12.) Press the "Finish" Button in the next dialog.





13.) Press the No Button and follow the steps described under point 15.



14.) Press the "Close" Button.



**15.) Please shut down the Computer now.**

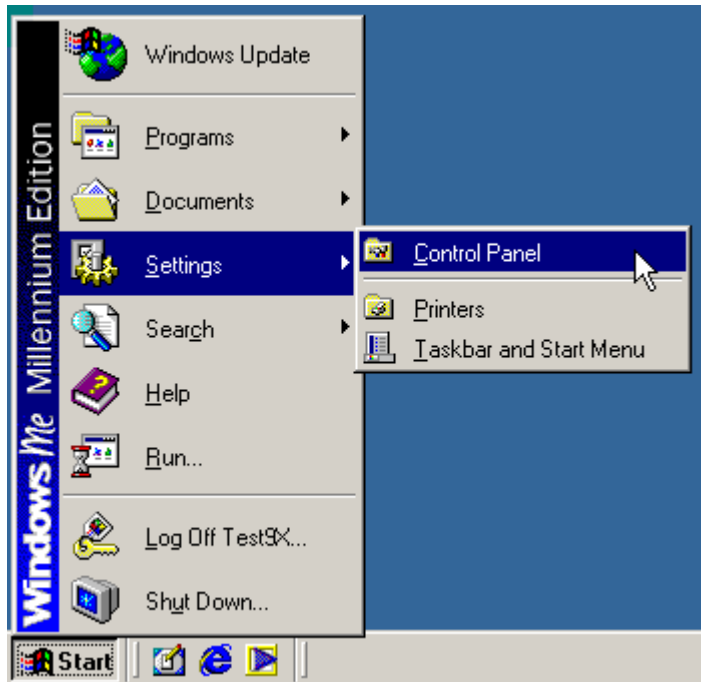
**For activating any new Midex Firmware, you have to unplug the Midex USB cable. If the Midex is also used in combination with an external power supply, you have to unplug that too.**

**Finally plug in all unplugged cables and restart the Computer.**

## **II. Windows Millennium Midex 8 Driver Update**

If you have already installed a Midex 8 please perform the following steps to update the Midex 8 USB Driver. Please pay attention to the end of these update instructions. The computer has to be shut down and switched off before the new Midex firmware becomes active.

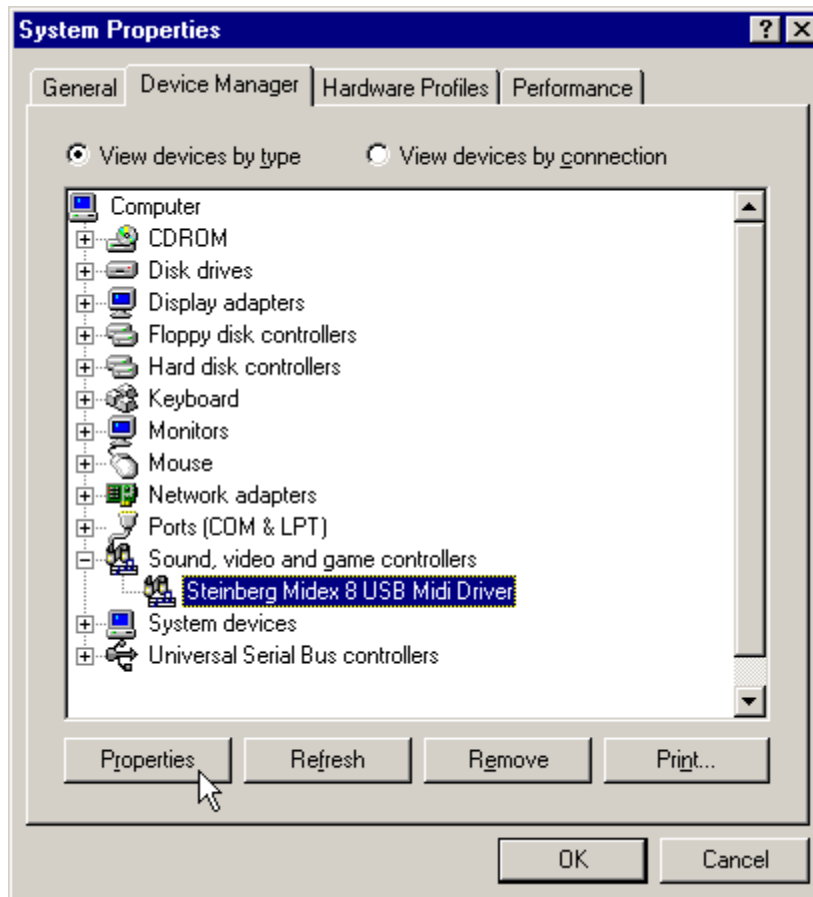
1.) Open the Start menu and select Settings/Control Panel.



2.) The Control Panel Window appears. DoubleClick the System Icon.



3.) Click the "Device Manager" tab and select the "Steinberg Midex 8 USB Midi Driver" located in the "Sound, video and game controllers" group. Press the Properties Button below the device list window.



4.) Select the Driver tab and click the "Update Driver..." Button in the Properties dialog.



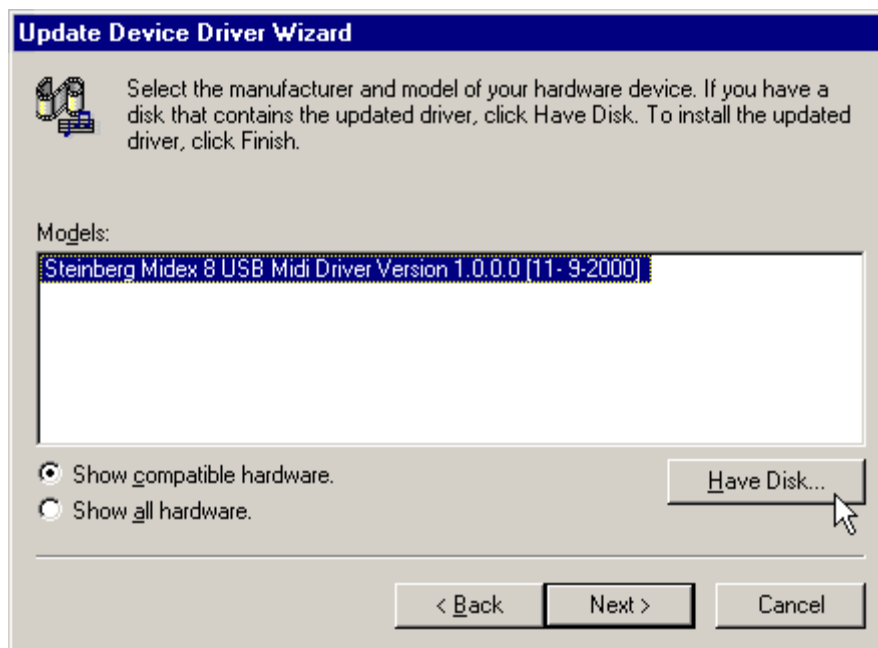
5.) Select the "Specify the location of the driver (Advanced)" radio button and click the "Next" Button.



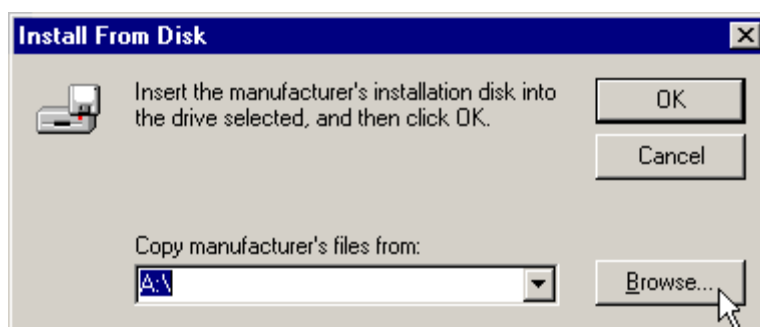
6.) Select "Display a list of the known devices ..." radio button and press the "Next" Button.



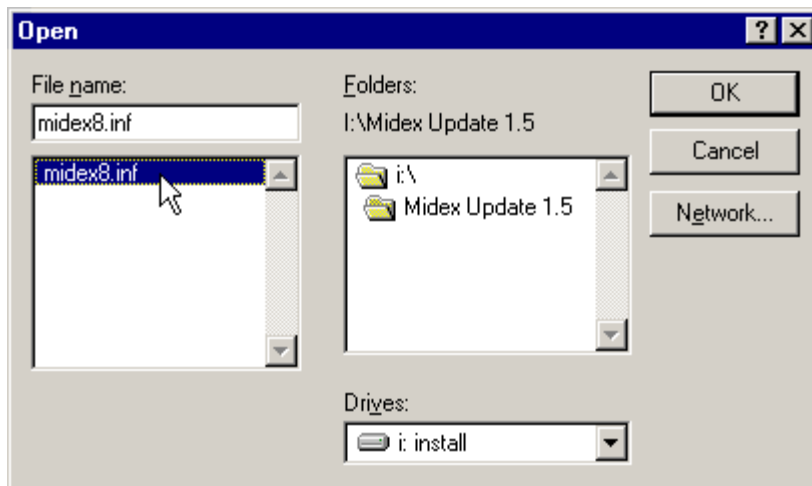
7.) Click the "Have Disk..." Button.



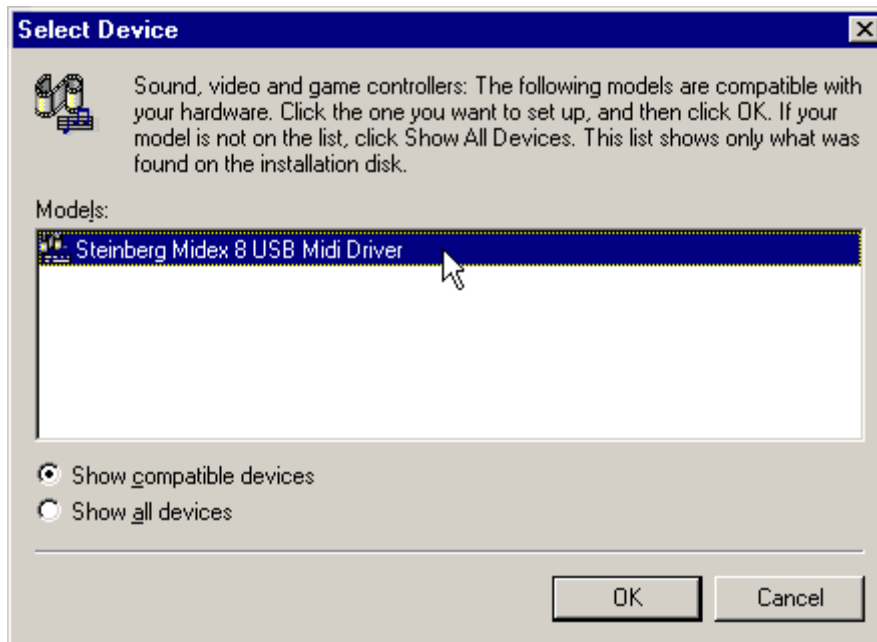
8.) Click the "Browse..." Button to select the new Midex Driver.



9.) Search the new Midex Driver directory, select the Midex8.inf file and press Open.



10.) Select the "Steinberg Midex 8 USB Midi Driver" in the List below and press the "OK" Button.



11.) Press the "Next" Button once again.

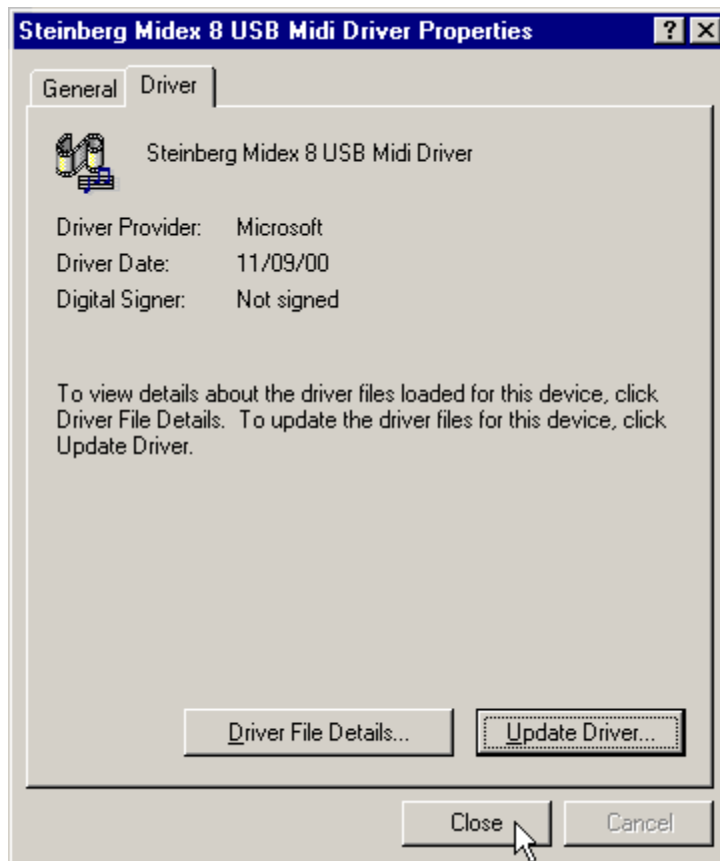


12.) Press the "Finish" Button in the next dialog.





13.) Press the "Close" Button.



14.) Please shut down the Computer now.

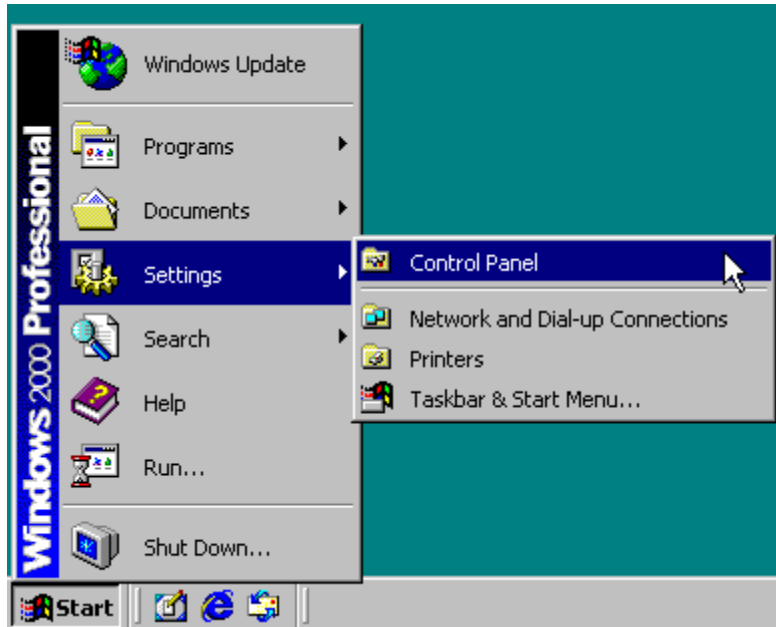
**For activating any new Midex Firmware, you have to unplug the Midex USB cable. If the Midex is also used in combination with an external power supply, you have to unplug that too.**

**Finally plug in all unplugged cables and restart the Computer.**

### **III. Windows 2000 Midex 8 Driver Update**

If you have already installed a Midex 8 please perform the following steps to update the Midex 8 USB Driver. Please pay attention to the end of these update instructions. The computer has to be shut down and switched off before the new driver or rather firmware becomes active.

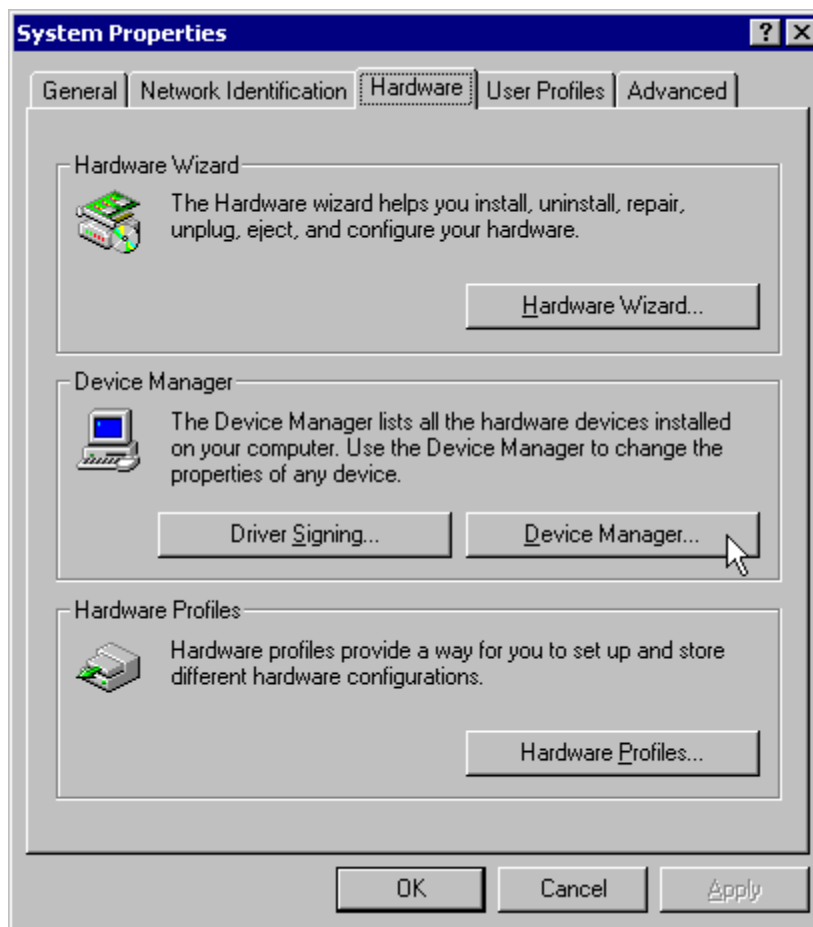
1.) Open the Start menu and select Settings/Control Panel.



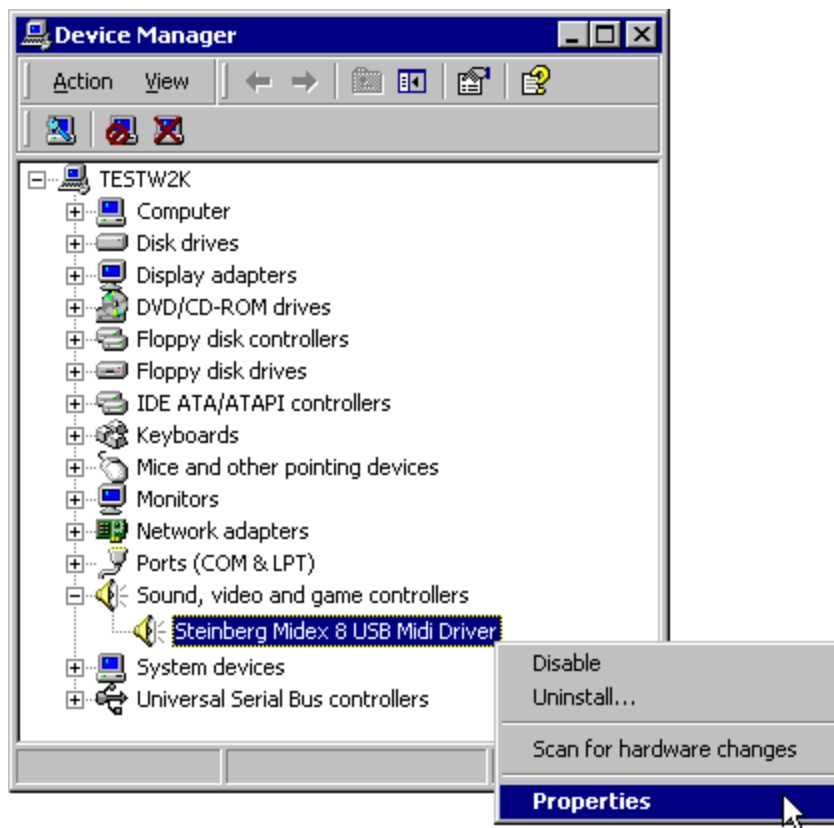
2.) The Control Panel Window appears. Double click the System Icon.



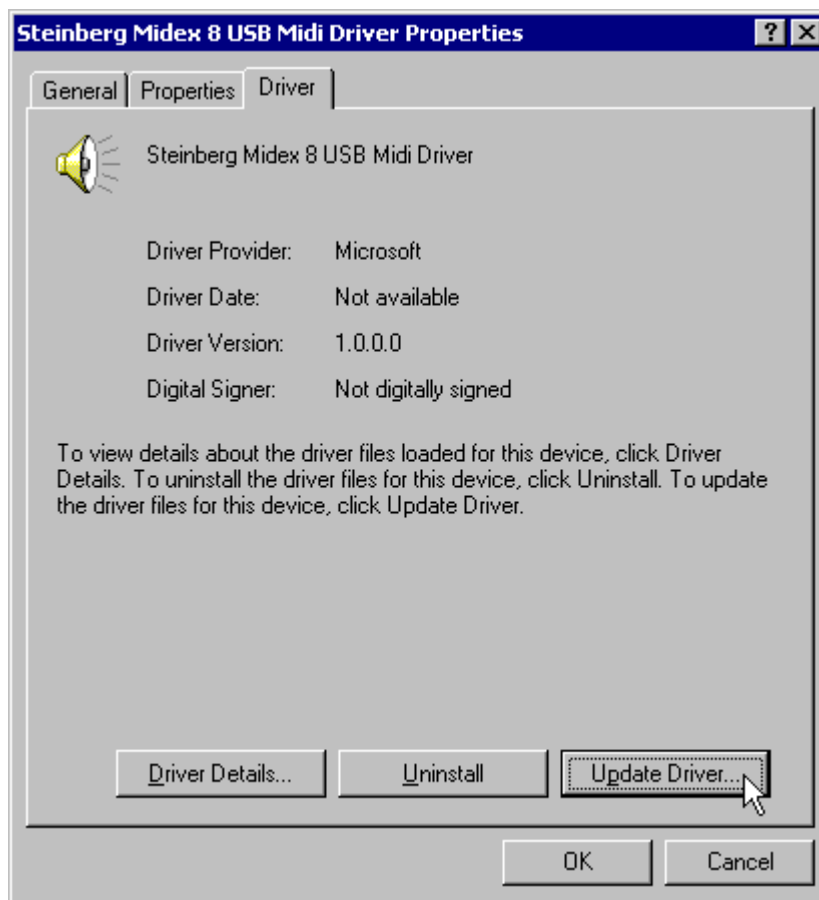
3.) In the following dialog select the Hardware tab and press the "Device Manager ..." button.



4.) Select the "Steinberg Midex 8 USB Midi Driver" located in the "Sound, video and game controllers" group, press the right mouse button to open a popup menu and select Properties.



5.) Select the Driver tab and click the "Update Driver..." button.



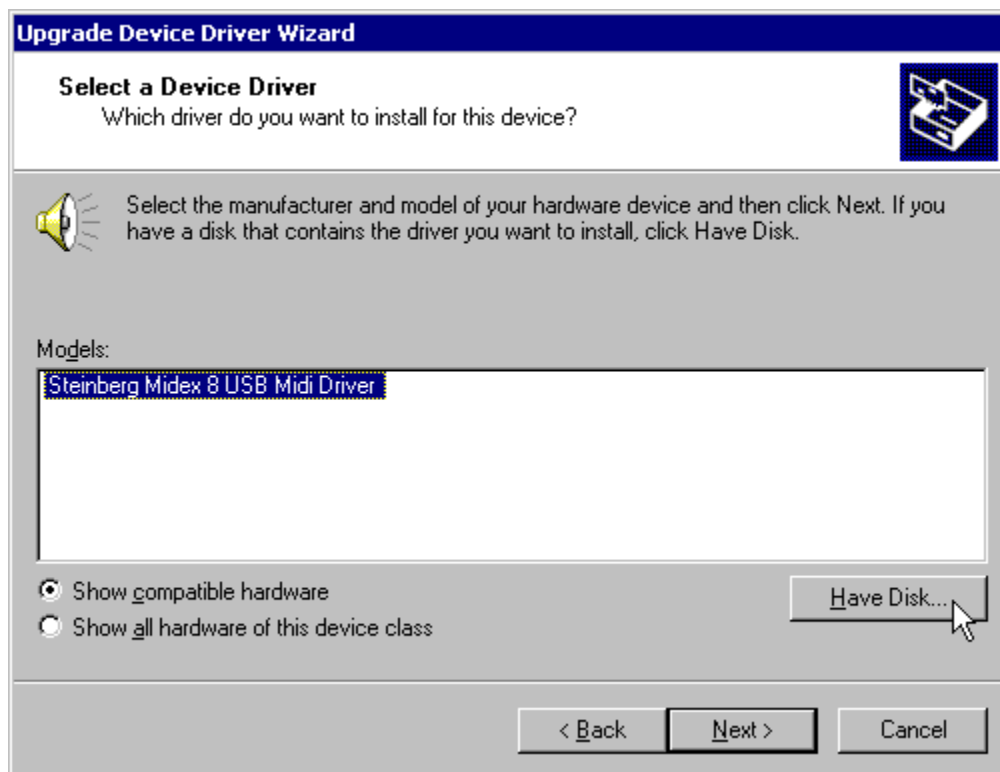
6.) Click the "Next" button in the following dialog.



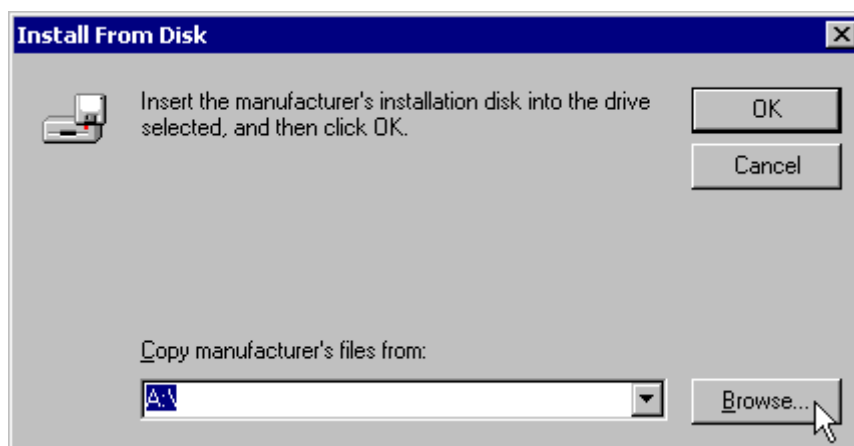
7.) Select "Display a list of the known drivers ..." radio button and press the "Next" button.



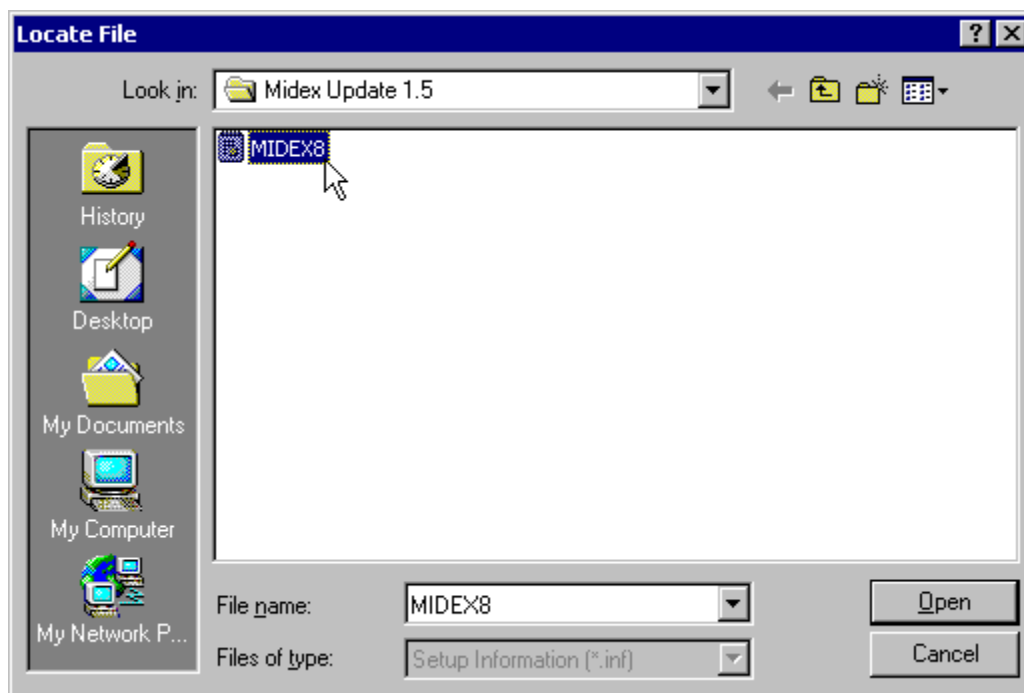
8.) Click the "Have Disk..." button.



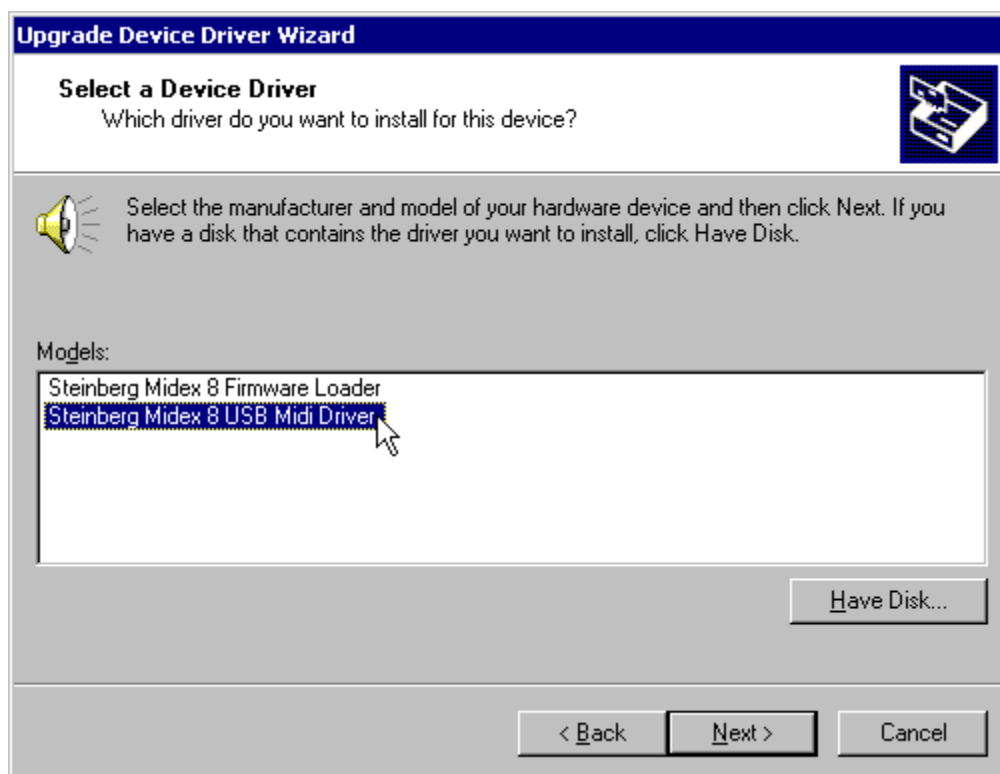
9.) Click the "Browse..." button to select the new Midex Driver.



10.) Search the new Midex Driver directory, select the Midex8.inf file and click Open.



11.) Select the "Steinberg Midex 8 USB Midi Driver" in the List below and click the "Next" button.

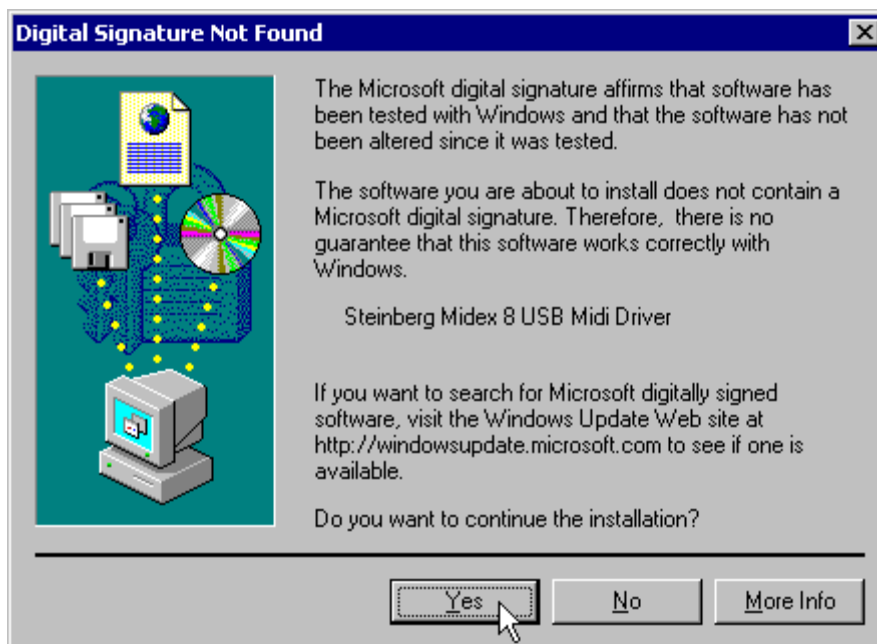




12.) Click the "Next" button again.



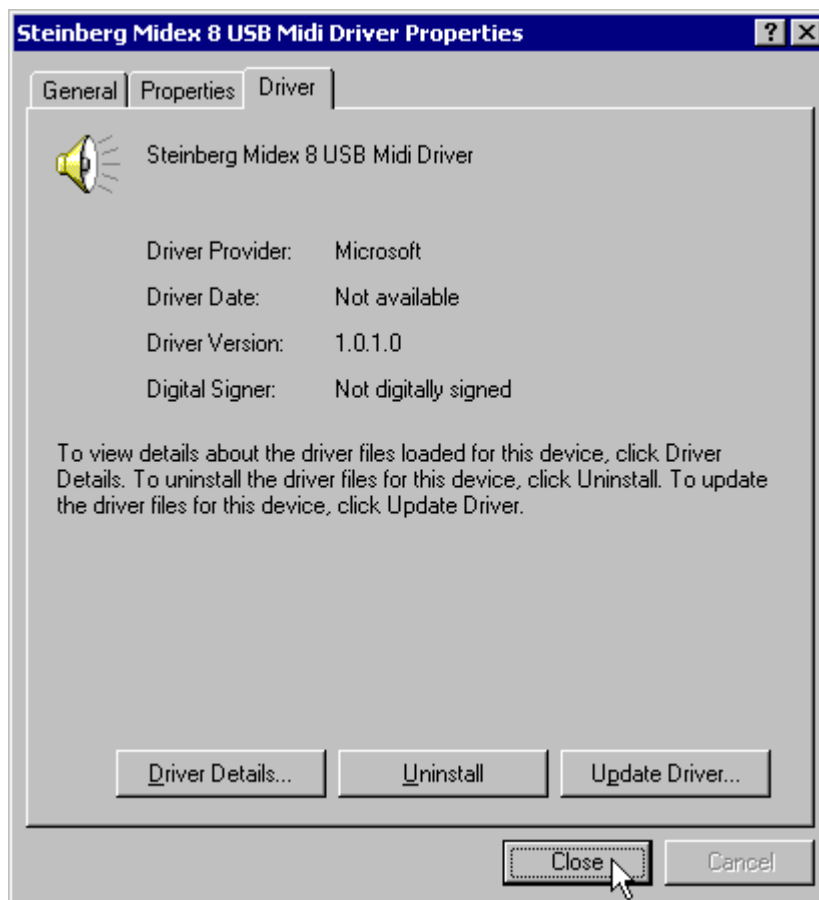
13.) Click the "Yes" button in the next dialog.



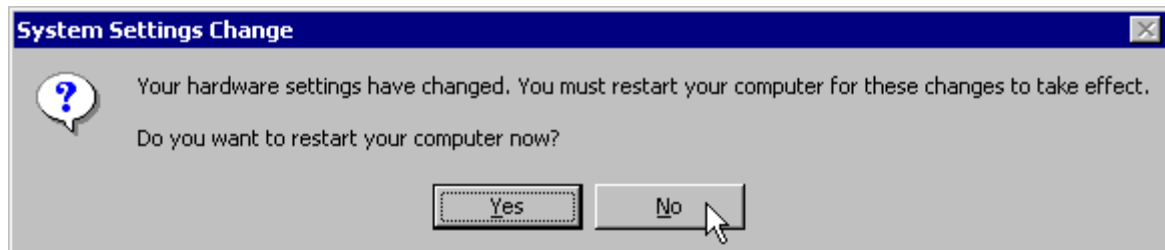
14.) Click the "Finish" Button.



15.) Click the "Close" Button.



16.) Do **N O T** reboot the System now. Please click the "No" button.



17.) Please shut down the Computer now.

**For activating any new Midex Firmware, you have to unplug the Midex USB cable. If the Midex is also used in combination with an external power supply, you have to unplug that too.**

**Finally plug in all unplugged cables and restart the Computer.**